

## I、 Introduction

1. Microwave Sensor LED Tube.
2. Start-up in a second, No flash, No UV.
3. Don't need to repair, its life time, is 10 times of traditional fluorescent tube.
4. It is used environmentally and saving energy, its consumption is same to 1/10 of traditional fluorescent tube.
5. soft light, vision of color is also good.
6. Where there is no presence, the LED motion sensor tube will go back to sleep mode and consume only 1/10 of the energy of the conventional T8 tubes.

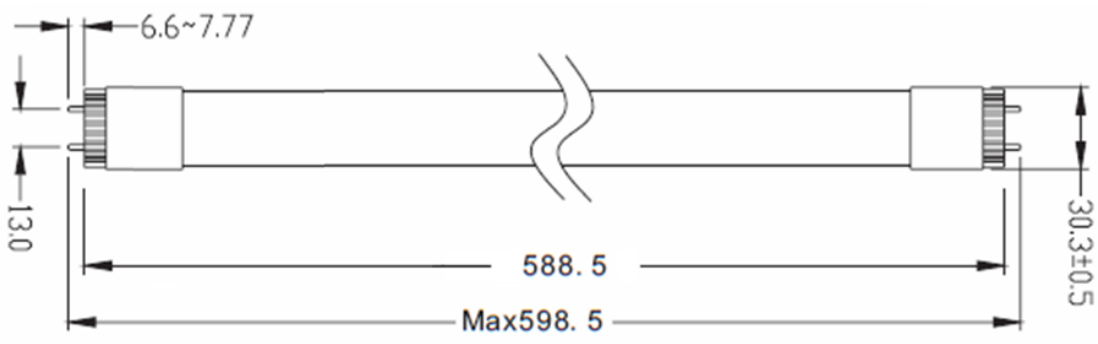


## II、 Parameter

1. Lens: Water Clear, Diffused, Milky
2. Color: Warmwhite
3. Lifetime: >40000 Hours

Item	Symbol	Tested Parameter			Unit
		Min		Max	
Brightness 10W	Flux		600		lm
Brightness 2W	Flux		100		lm
Power 100%	PLED		10		W
Power 20%	PLED		2		W
Color Temperature	CCT	2700		3500	K
Voltage AC	Vin	110	220		V
Temperature	Topr	-20		40	°C
Storage Temperature	Trms	-40		60	°C
View Angle	2θ1/2		120		Deg.

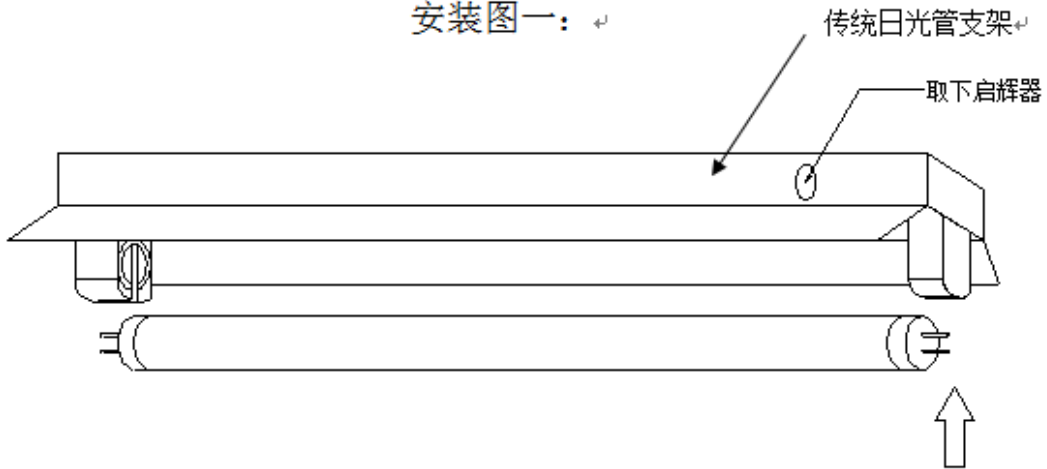
## III、 Size (mm)



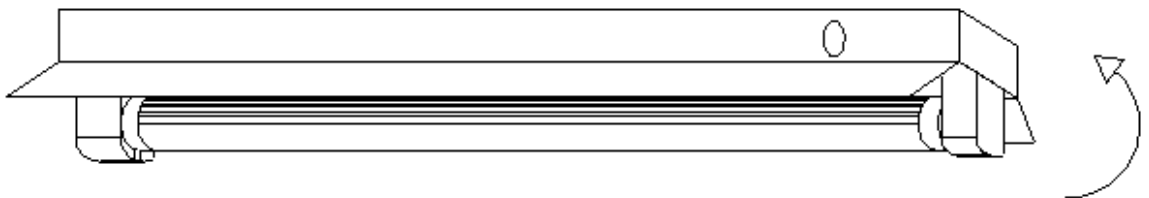
Installation method:

安裝LED感應光管前必需先BY  
PASS(去掉支架內的鎮流器)

安裝圖一：



安裝圖二：



LED日光灯管透光面朝下按装

Certificate:

