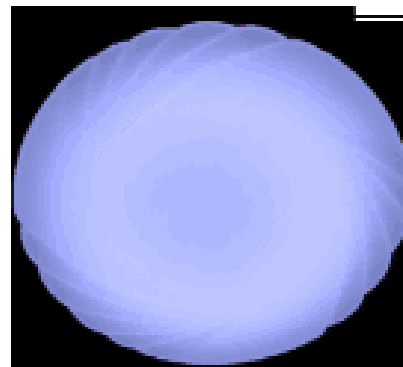


I、 Introduction

1. High luminous efficiency
2. Solving the over-heat problem
3. High lumen maintenance
4. Convenient to install
6. Long life time & more stable



II、 Parameter

1. LED Emitting Color: Cool White
2. Size: Diameter=350mm, High=100mm
3. Lifetime: >30, 000 hours

III、 Electro - Optical

Parameter	Symbol	Min		Max	Unit
Brightness	Flux	1400		1500	lm
Color Temperature	CCT		6000		K
Voltage	V / AC	85		265	V
Operation Temperature	To	-25	30	50	°C
Total Power	P		15		W
View Angle	2 θ 1/2		120		Deg.

V、 Size

